

280W Li-Ion

- DC out 25~83V @ 3.5~6.6A
- AC in 90~265V
- Li-Ion Fully Sealed Battery Charger



Mercury

430W Li-Ion 48V

- DC out 29~54V @ 8A
- AC in 90~264V
- Li-ion Battery Charger
- CAN Bus



Saber

600W Li-Ion 72V

- DC out 36~84V @ 7.2~11A
- AC in 90~264V
- Li-ion Battery Charger
- CAN Bus



Armor

725/1325W Li-Ion 96V

- DC out 69~116V @ 6/12A
- AC in 90~265V
- Li-Ion OBC, CAN Bus
- Fully Enclosed



Z-Series

750W for 24V Lead Acid

- DC out 22~30V @ 25A
- AC in 90~265V
- Lead-Acid Battery
- On-Board Charger



750W for 24V Li-Ion

- DC out 15~29.4V @ 25A
- AC in 90~265V
- Li-Ion Charger
- On/Off Board Charger
- CAN Bus, IP65



Diamond

1kW Li-Ion 72V

- DC out 40~84V @ 12A
- AC in 90~264V
- Li-ion Battery Charger
- CAN Bus



Saber

1kW for 48/72V Li-Ion

- DC out 28~58.8V @ 18A or 43~86V @ 12A
- AC in 90~264V
- On/Off Board Charger
- CAN Bus, IP67



Diamond

1.5kW 48V Li-Ion

- DC out 28~58.8V @ 25.5A
- AC in 90~264V
- CAN Bus
- On/Off Board Charger
- IP67



Diamond

1.8kW 72V Li-Ion

- DC out 43~86V @ 21.5A
- AC in 90~264V
- CAN Bus
- On/Off Board Charger
- IP67



Diamond

2.4kW for 48V Li-Ion

- 35~60VDC Out @ 40A
- 90~265VAC In
- Li-ion High-Density
- CAN Bus
- J1772



Rubi

3.3kW HV Li-Ion

- 200~420VDC Out @ 10A
- 90~265VAC In
- CAN Bus
- Li-ion High-Density
- J1772



Rubi

3.4kW for 72/84V Li-Ion

- 55~84VDC Out @ 40A
- 70~122V DC Out @ 34A
- 90~264V AC In
- CAN Bus
- J1772



Rubi

3.5kW for 48V Li-Ion

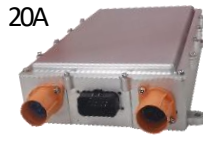
- 35~60VDC Out @ 60A
- 90~264VAC In
- CAN Bus
- J1772
- IP66



Rubi

6.6kW HV Liquid Cooled

- 200~420VDC Out @ 20A
- 90~265VAC In
- CAN Bus
- J1772
- IP67



Emerald

20kW EV Charger Station

- DC out 200~1000V @ 67A
- AC in 380V, 3-Ph.
- 97.5% efficiency
- CAN Bus
- Parallelable, Hot Plug



Ver.240418

48W Isolated DC-DC

- Wide DC Input: 22~160V
- Output: 24V DC @ 2A
- Natural Cooling
- On/Off Control
- IP55



Non-isol. Dual Out 94W

- Non-isolated DC/DC
- Input: 36~72VDC
- Output A: 12V / 7A
- Output B: 5V / 1A
- Efficiency to 94%



Nano

Non-isol. Dual Out 125W

- Non-isolated DC/DC Module
- Input: 36~100VDC
- Output A: 12V/8A (10A peak)
- Output B: 5V / 2A
- IP65



Iron

Non-isol. Dual Out 130W

- Non-isolated DC/DC Module
- Input: 28~92V
- Output A: 12V / 10A
- Output B: 5V / 2A
- Efficiency to 96%



Non-isolated 200W

- Non-isolated DC/DC Module
- Input: 40~90V
- Output: 13.8V/14A
- Enable Input
- IP65



Neon

Non-isolated 320W

- Non-isolated DC/DC Module
- Input: 28~160VDC
- Output: 24V @ 13.3A
- Efficiency to 95%
- On/Off control, IP65



300W Isolated DC-DC

- Input: 30~130 VDC
- Output: 13.2V@23A and 24V@12.5A
- Molex or Flying lead
- IP67



Marble

250~1kW Isolated Bricks

- 4:1 Input: 9~36VDC
- Output: 12~53V, 1kW FB 500W HB, 250W QB,
- -40~+100°C operation
- Fully protected



LV-series

360W Isolated DC-DC

- Input: 100~400VDC AC input Optional
- Output: 5~48V @ 7.5~45A
- Efficiency to 95.5%



Caesar

500W Isolated DC-DC

- Input: 30~130VDC
- Output: 13.5V @ 38A and 27.5V @ 18.5A
- Molex or Flying lead
- IP67



Marble

600/1000W Isolated DC

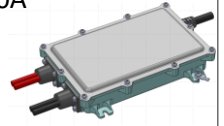
- Input: 280~420VDCV
- Output: 9~6V @ 43A or 72A
- Efficiency to 96%
- IP67



Leopard

2.5kW Isolated DC-DC

- Output: 9~16V @ 180A
- Input: 200~450 VDC
- 93% Efficiency
- CAN communication
- Chill Plate Cooling



Atlas

2.5&4.5kW Bi-direction

- 410V/48V Bi-directional Isol. DC/DC
- HV 300~450V 10.5~14.5V
- LV: 28~58.4V @ 6.6A
- 97% Efficiency
- CAN communication



Orion

3kW Bi-directional DC

- Bi-directional DC/DC Module
- In/Out: 270~420V & 10.5~14.5V
- Out: 14.5V @ 143A & 380V (Typ.) @ 11A
- Liquid Cooling / IP66



Orion

3~4.2kW Isolated DC-DC

- Output: 27.5V @ 110/146A ~or 48V @ 55/84A
- Input: 280~880VDC
- Chill Plate or Heatsink
- Efficiency 95.5%, IP67



Falcon

6.6/3.3kW Fuel Cell

- Input: 50~300 VDC
- Out: 300~450V @ 22A or 30~86V @ 80A
- Uni or bi-direction
- Smart Redundancy



Nova